

## CONTROLLER FIRMWARE V. 15

Our newest controller firmware release now offers boiler rotation logic that you can use to control the firing sequence of heating systems that use more than one identical boiler.

Multiple boilers are normally fired sequentially, as the heating demand increases. For example, Boiler No. 1 might be programmed to turn on when the total heating demand is less than 15 percent. Boiler No. 2 might be programmed to turn on when the heating demand ranges between 15 percent and 30 percent and so on. This sequence is often fixed. The new Multi-Boiler Rotation program allows you to manually or automatically rotate the boiler firing sequence to achieve even wear on your system components.

In addition, individual boilers can be taken out of service for maintenance without major changes to your control configuration. Up to 24 individual boilers can be operated as a single managed group. Each boiler can control a circulation pump and up to 4 managed stages or firing levels.

**If you require multi-boiler rotation control, call your Argus reseller or Argus.**

## New Staff at Argus

Argus is pleased to welcome new software programmers **Andy Ma** and **Jordan Lapp** to our growing research and development team, and **Mark Wang** as our new Management Information Systems specialist. Over the coming months we will be introducing a range of new products to compliment our core control systems. We're also continuing to extend the capabilities of our operator software to provide you with the most powerful and flexible options when it comes to monitoring and control.



Andy Ma



Jordan Lapp



Mark Wang

## UPCOMING TRADE SHOWS

Ohio Florist's Association Short Course (Booth 1021)  
Columbus, Ohio  
July 11-13, 2004

CanWest Hort Show (Booths 1520 & 1522)  
Vancouver Trade and Convention Center  
Vancouver, British Columbia  
September 23 and 24, 2004

Canadian Greenhouse Conference (Booth 420)  
INTERNATIONAL CENTRE  
Hall 5 - Arrow Hall  
6900 Airport Road, Mississauga, Ontario  
October 6 and 7, 2004

If you are planning to attend any of these shows, please stop by, we'd love to see you.

# S

ummer  
2004

Greetings to Argus users worldwide. As the number of installed Argus systems continues to grow, so does our geographic reach. This past year we've welcomed many new customers of all sizes, including some in New Zealand, Australia, and even the South Pole! Yes, that's right, the South Pole. Argus provided a control system and design input for a complete hydroponic growth room developed at the University of Arizona for the new Amundsen-Scott South Pole Station in Antarctica.

One reason why we can tackle these diverse applications is the inherent durability and flexibility of our systems. Another reason is our unmatched remote control capabilities. It turns out that many of the features that make for a great all-purpose control system for horticulture also make us a good fit for other types of industrial and research control situations.

In this issue of the Argus Newsletter, we'd like to tell you about our latest software release. With the new **Argus for Windows 3.0** operator access program, we are introducing a number of great features, many of which were suggested by customers.

We're continuing to develop our systems to provide for the widest possible range of sensor choices, superior data acquisition and analysis, and the most power and flexibility possible when it comes to managing real-time control applications.

Finally, we'd like to remind you that our lifetime commitment to customer support is there for you to use. If there is anything we can do to help you get the most from your Argus system please feel free to call or send an E-mail anytime. We always welcome your comments and suggestions too!

Sincerely,

Alec Mackenzie



## ARGUS ADVISOR

News for Argus Control System Users



Gladland Flowers, Australia



Harbin Greenhouses, China



Metrolina Greenhouses - Huntersville NC



The Scotts Company, Marysville OH

## CONTENTS

Argus for Windows 3.0 Features

Controller Firmware Version 15

Upcoming Trade Shows

New Staff at Argus

©Argus Control Systems Ltd., 1281 Johnston Road, White Rock, BC V4B 3Y9  
Sales: +1 800-667-2090 or 604-538-3531 • Service: +1 888-667-2091 or 604-536-9100  
Web: [www.arguscontrols.com](http://www.arguscontrols.com) • E-mail: [argus@arguscontrols.com](mailto:argus@arguscontrols.com)

We've just released our newest version of the **Argus for Windows** operator access program and we wanted to tell you about it first. **Argus for Windows Version 3.0** continues our efforts to provide a simple to use, yet powerful control system interface that you can shape to your needs. Here are some of the newest features:

### New Argus Graph



Graphical Analysis of recorded data has always been a key feature of Argus systems. **Argus for Windows 3.0** greatly extends this ability with a completely revised graphing tool to help you to better visualize and understand your recorded data. Here are some of the many new features:

- Fully compatible with existing Data Recording Reports and Archival Data
- An independent, resizable Graph Window lets you browse through your system screens while viewing recorded data
- View all of your saved Archival Data from local or remotely connected PCs
- Select the parameters for graph reports directly from your system screens
- Display up to 64 channels of recorded information per graph
- Interactive on/off toggling of channel display and single channel focus helps you to manage large numbers of parameters in each graph
- Y-axis scaling values change automatically with highlighted channels
- Automatic refresh of the most recently recorded values
- The standard Daily, Weekly, Monthly, and Yearly reporting periods have been retained
- Pan, scroll, and zoom the X and Y-axes interactively using on-screen buttons or by moving them directly with the mouse
- Create new graphs ad-hoc, or save them for future viewing
- Saved Graph Reports retain their current views and scaling
- Enhanced display of tabular data with copy and paste of selected data to other MS Windows® applications
- Place shortcuts to your saved graph reports anywhere on your system

### New Data Streaming

To compliment our new graphing utility, we've also created a new method for recording data. With our new **Data Stream** utility, you can now record any data point from your control system at your own selected sampling interval. This stream of real-time data can then be graphed and analyzed using the new **Argus Graph** tool. This handy new feature further enhances our already powerful controller-based Data Recording utility that records 15-minute averages based on one-second measurement intervals.

This new data streaming method will be of particular interest to researchers who sometimes need to record higher frequency point-sample data for experiments. It's also handy for anyone who needs to track fast-changing events, or troubleshoot equipment operation. Sampling frequencies can be as high as one or two seconds, although you may need to balance this against higher network loads. You can now choose between the speed and storage efficiency of the standard 15-minute averaged data or the sampling detail and response of Argus PC Data Streaming.

### New Multi-Line Notes and Hyperlinks

We've enhanced our User Label feature so that you can now create multi-line messages or "sticky notes" as on-screen annotations. You can also create **hyperlinks** to external applications. As with standard User Labels, these can be placed in any Factory Screen or User Window.

With **Argus for Windows 3.0** you can easily create **hyperlinks** to local files and other applications from within the Argus for Windows program. You can place your hyperlinks on any screen in the system and use them for creating, editing, and launching your own supporting documents any time you need them. You can also launch supporting applications such as spreadsheets, calculators, and conversion programs from within the Argus program.



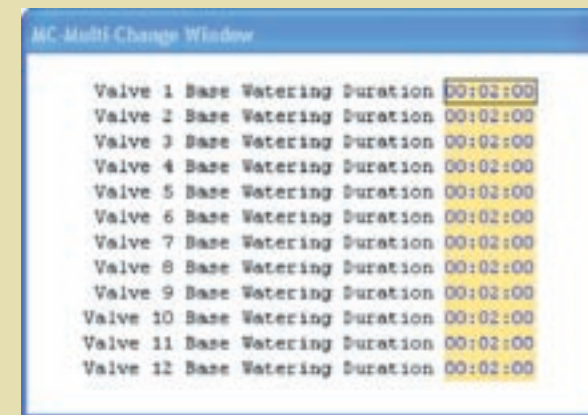
### New Multi-Setpoint Change

This new feature was requested by several customers who often need to make repetitive and identical changes to common parameters. We think many of you will appreciate this feature.

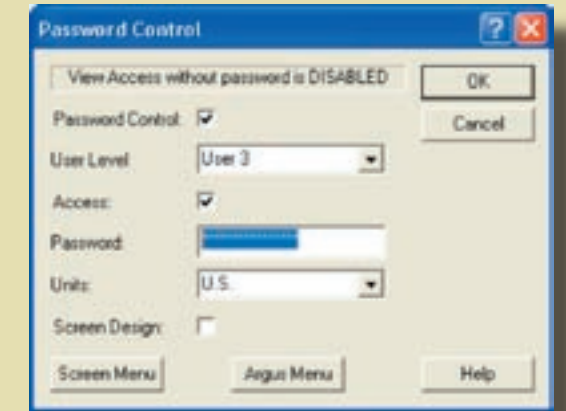
You can now change more than one setpoint value with a single entry. For example, you might want to increase the watering duration for a number of irrigation zones, or change your period heating/cooling setpoints across several zones at the same time.

This can significantly speed up the time it takes to make repetitive settings while at the same time helping to avoid errors or omissions. By simply creating a special user window and placing shortcuts to the common parameters that you wish to change, all of the values in the window will be changed whenever you edit one of them. What's more, they are grouped together in a common window, so you will see them all change together.

You can create any number of Multi-Change windows to suit your needs. You can still change individual parameters by selecting and editing them from outside of the Multi-Change window. This way, you always have the choice of making multiple or single parameter changes.



### New Password Control



Customers operating Argus systems in public and multi-user settings requested this enhanced password control feature. We've added a new option that requires a password before any Argus screens can be viewed or accessed. In addition, you can designate the specific areas that each authorized password can view. The areas where a user is not authorized to make changes are hidden. Additionally, if there are any parameters from these hidden sections that are displayed as Shortcuts on otherwise accessible screens, the values of these parameters are also hidden.

This new password configuration is an option. You can still maintain your present password controlled access settings if you do not require this type of restricted access.

## Upgrading to Argus for Windows 3.0

**Argus for Windows 3.0**® requires Windows XP® Home or Professional. It is available in two license versions: Single and Multi-User. The Multi-User License option permits unlimited, simultaneous remote client access to your control system via wired or wireless Ethernet LAN or the Internet.

Call your Argus reseller or Argus for pricing details.